

VIDEOFIED FRONTEL TMT USB

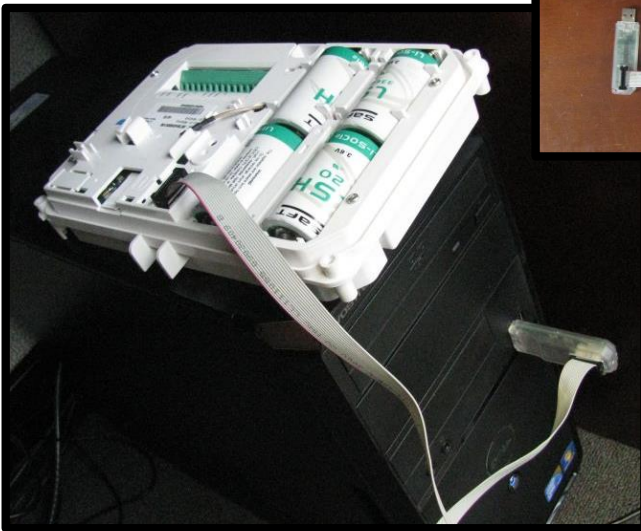
USERS MANUAL

Author: Andrew Opp & Kyle Omath

Date: January 20th 2015

Version: 1.5

Necessary Tools:



- USB Programming cable
- Windows based computer with Frontel TMT2 Portable loaded
- X series control panel (XL, XT, XTX, XTO)
- Power supply for Control Panel

Contents

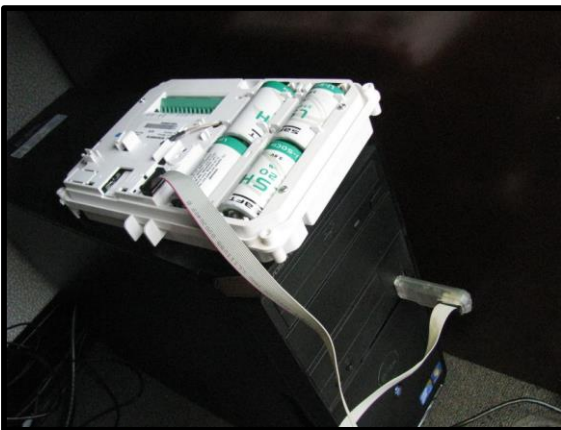
How to Initiate the Panel Connection to the Computer	3
Understanding the TMT Installer Screen	4
1. Open Alarm Panel List	4
2. Close Panel	4
3. Direct Connection	4
4. Hangup	6
5. Edit Configuration.....	6
6. Device Management	8
7. Scheduling	10
8. Set Date/Time to PC.....	10
9. Panel Status	10
10. Panel Log...	11
11. Camera Control Overview.	12
12. Cellular Level Testing.....	15
FAQ.....	16
Troubleshooting.....	20

How to Initiate the Panel Connection to the Computer:




1. Plug in the USB programming cable to the computer that has TMT Installer loaded



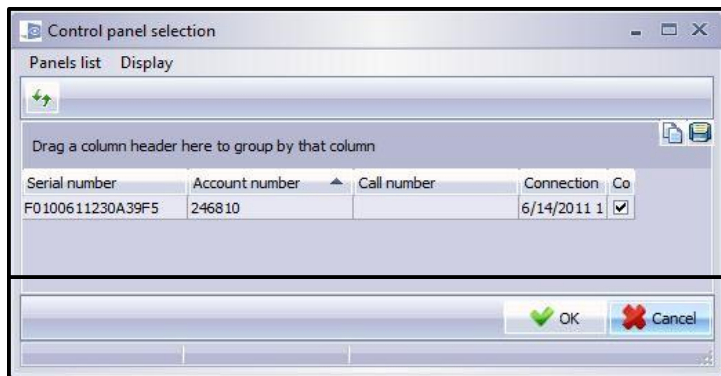
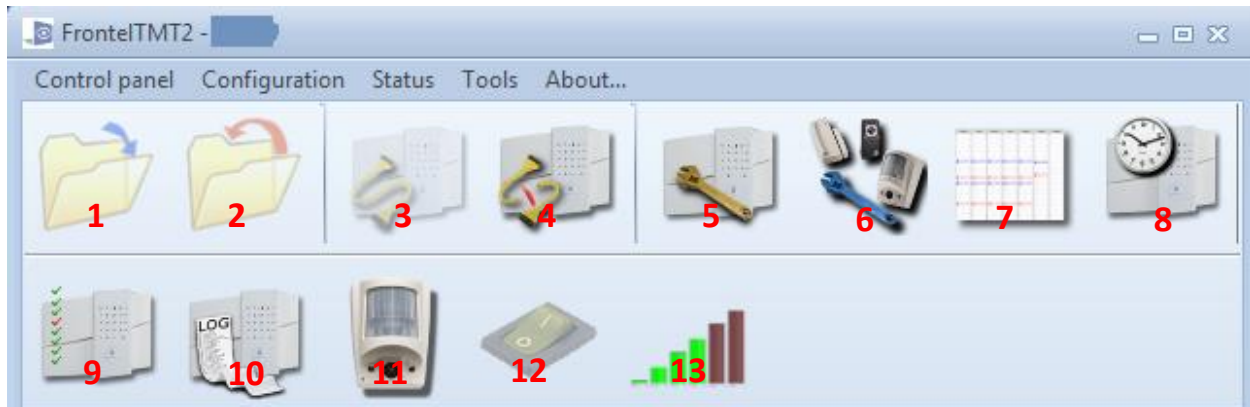
2. Power the control panel and plug the USB connector into the panel (XT Control Panel shown)



3. Open the folder containing the Frontel TMT2 Portable software and double click the **Start.vbs** file to run the program

Name	Date modified	Type	Size
 driver	1/6/2014 12:25 PM	File folder	
 Frontel2	2/26/2014 8:16 AM	File folder	
 Start	12/26/2013 3:12 PM	VBScript Script File	4 KB

4. You will want to click **Open/Run** if prompted with any security warnings.

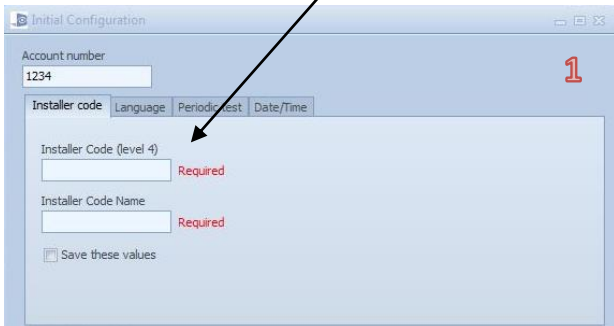


Understanding the TMT Installer Screen

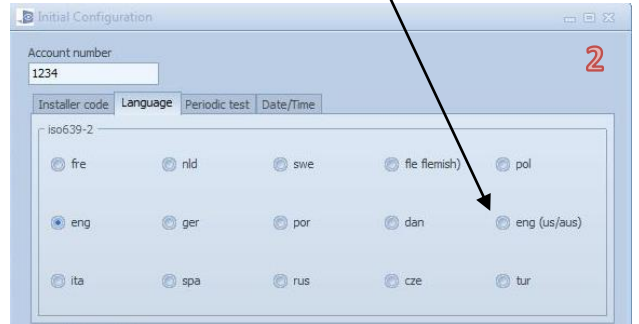
1. **Open Alarm Panel List:** This shows all panels that have connected to this TMT Installer in the past. If a panel in that list is currently connected with the PC and transmitting an event to the panel it will have a check mark next to it. To OPEN the panel, click on the serial number and hit the OK button
2. **Close Panel:** This will clear all panel information from the main screen, allowing you to use the Open Alarm Panel List and connect to a different panel.
3. **Direct Connection:** When you have never connected with a panel previously or do not want to look through the Open Alarm Panel List you can click Direct Connect which will force the TMT Installer to connect to the panel over the USB programming cable. You will first see a connection screen then see that the panel is connected on the main screen. If the panel does not contain programming, the initial programming screen prompt will automatically pop up.

➤ If this is the first time you are connecting to the panel and there is no programming you will see the following screens where you must fill in the required fields to continue

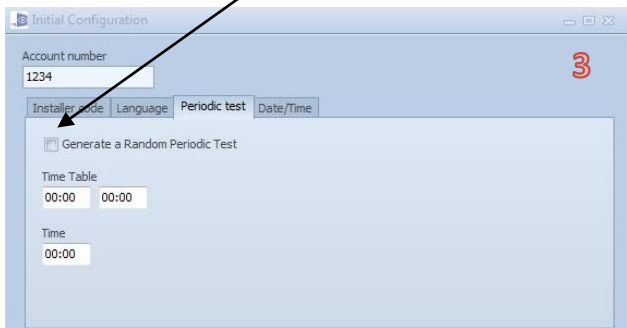
➤ Use these fields to enter an Installer code and Installer code name



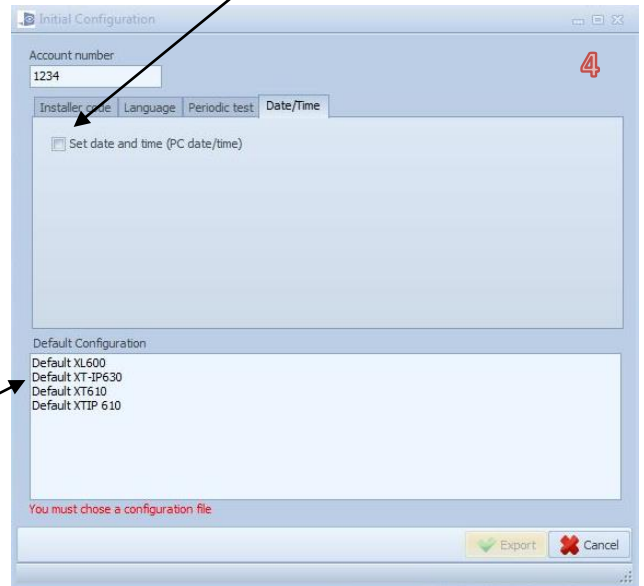
➤ In this tab you must select a language. If nothing is selected the panel will default to Turkish



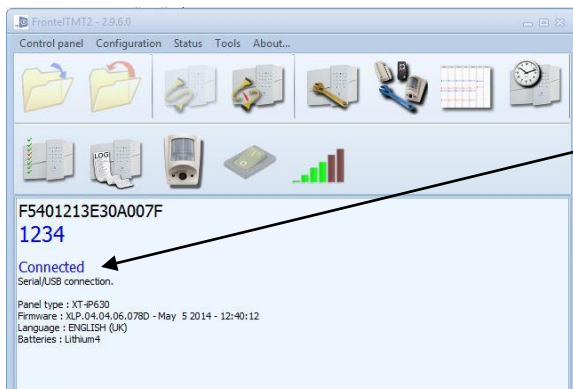
➤ You can check a box to make your Periodic test random or choose the time that you would like to have it happen



➤ To set the time and date of the panel to your PC time check this box

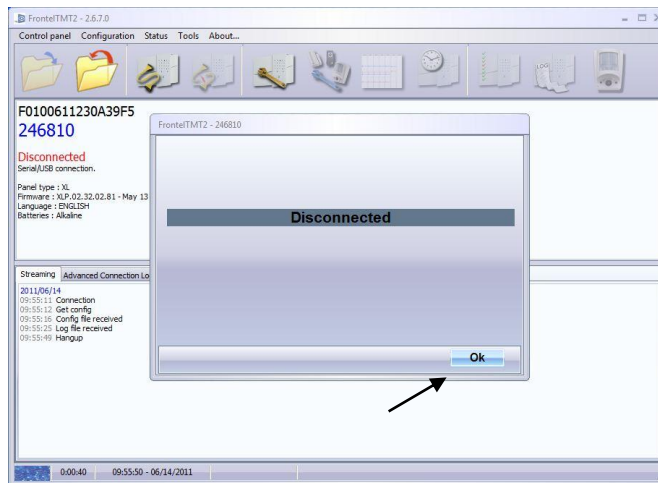


➤ You must also choose one of the Default Configurations, if you have not added your own.

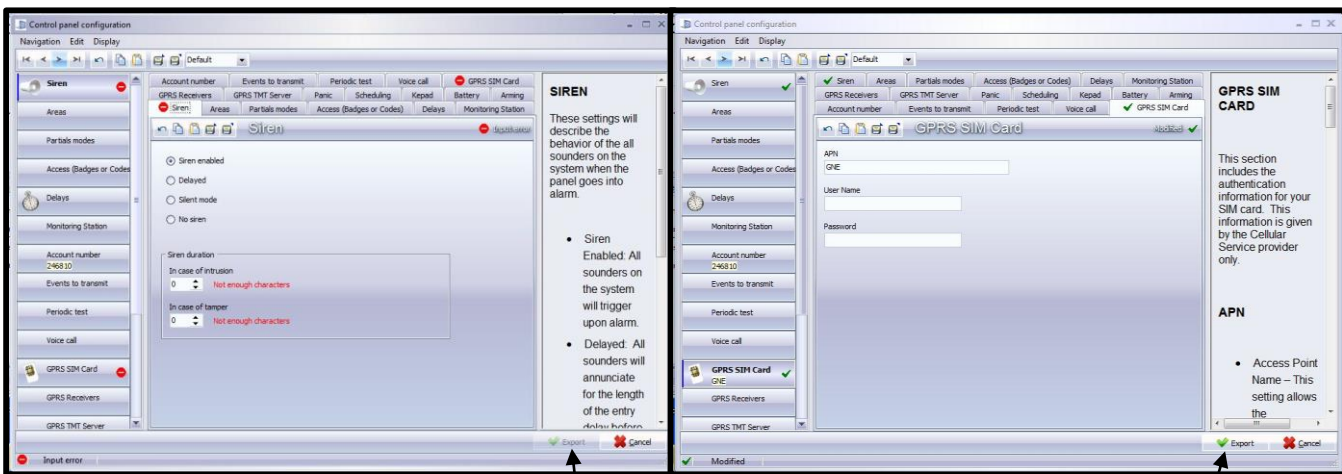


➤ If you have already connected to the panel it will show that you are connected on this screen

- Hangup:** When you have completed the configuration of the panel and you would like to disconnect, you must hit the Hangup button.



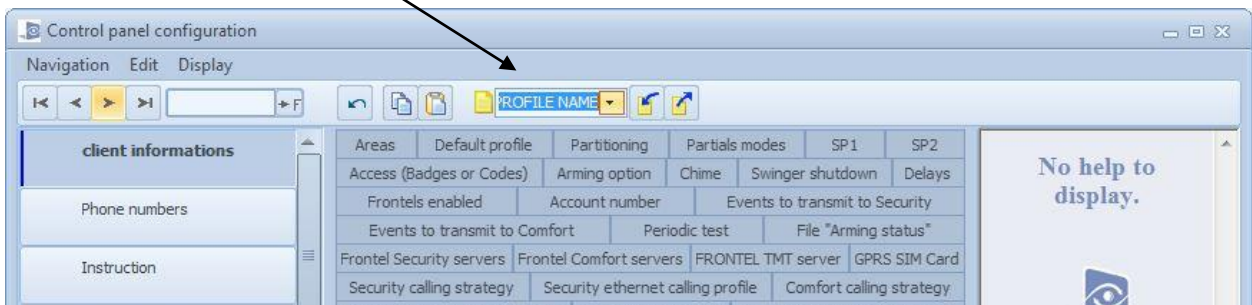
- Edit Configuration:** Once you are connected with a Control Panel and want to make configuration changes to the programming you will use Edit Configuration. This will launch a new window which will tell you about required fields that must have an entry in order to EXPORT the changes to the control panel.



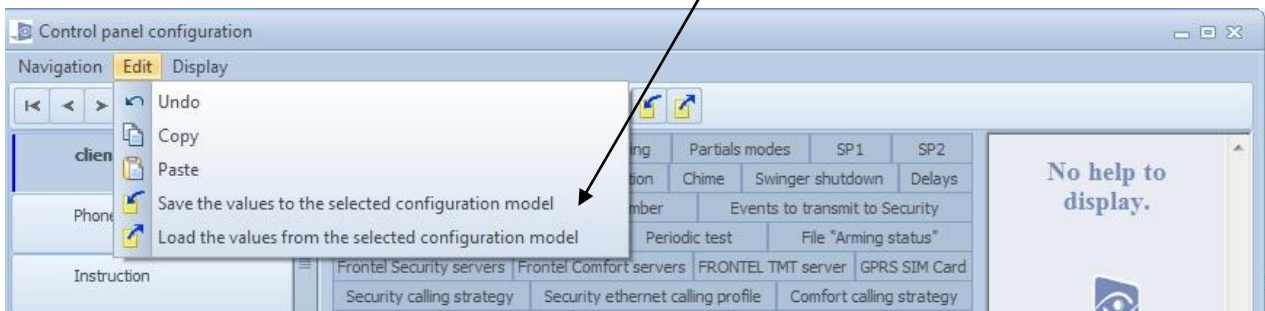
Edit configuration letting you know you must fill in required fields before export

Edit configuration now letting you choose to export your changes

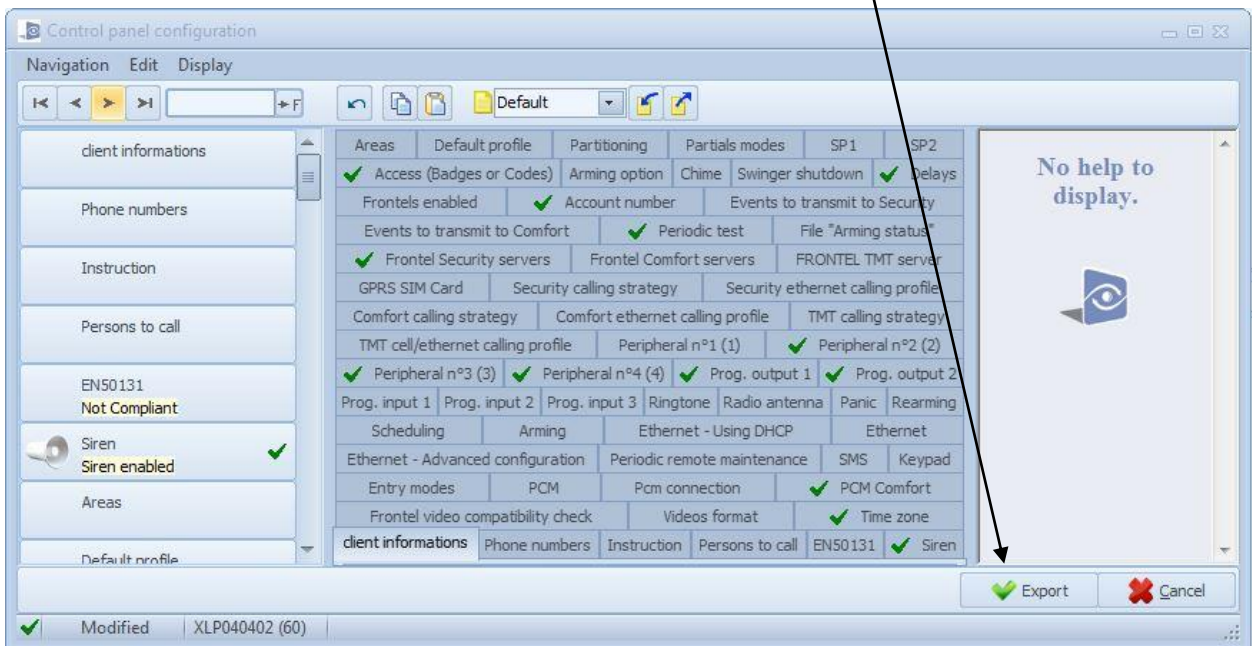
- A. Once in configuration you are able to **save** your current configuration model to **load** onto another panel in the future
1. Use this field to enter a file name for the configuration model that you are saving



2. Once a configuration model is named you can save/load that configuration by simply clicking save/load values under the edit tab

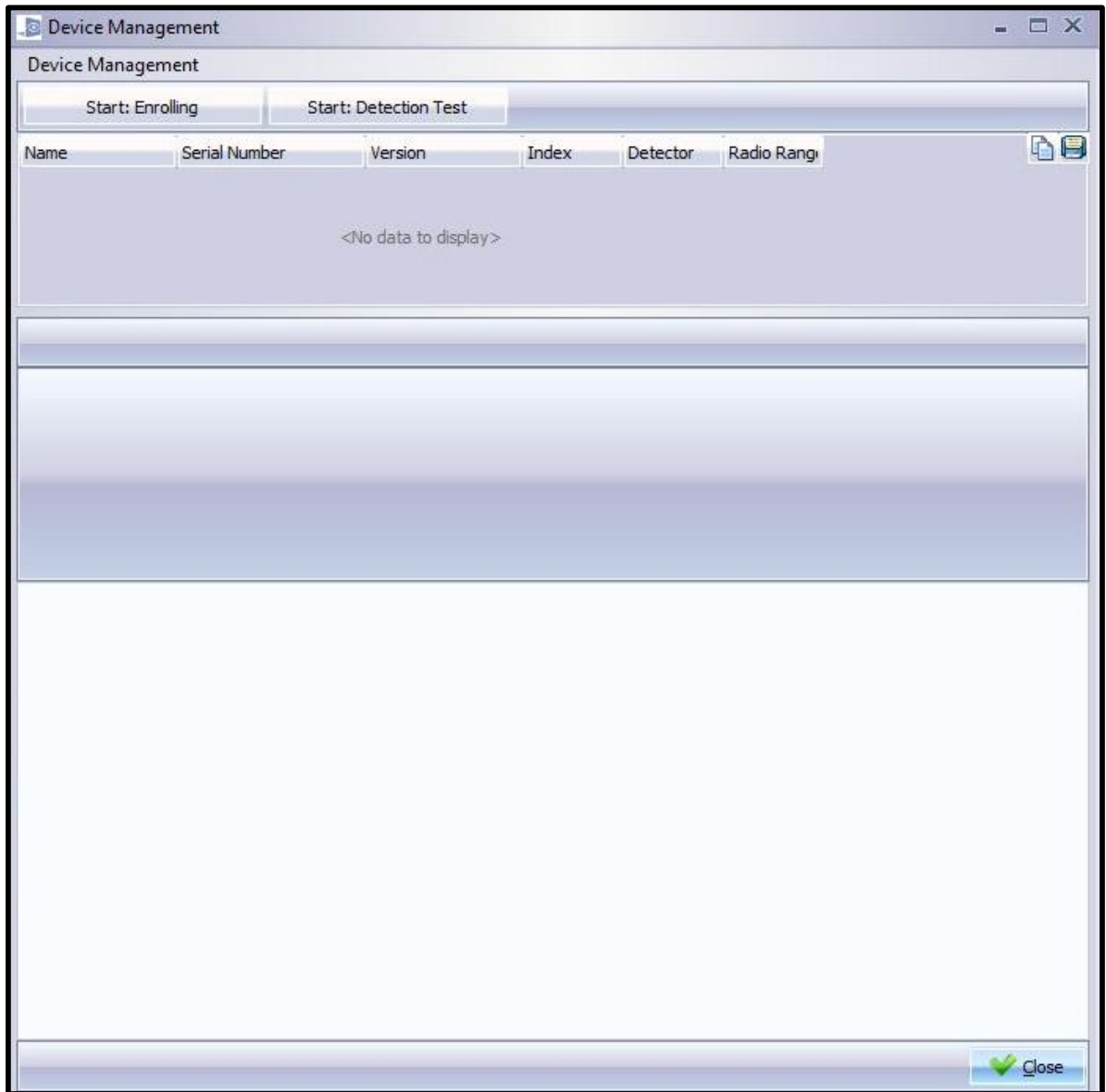


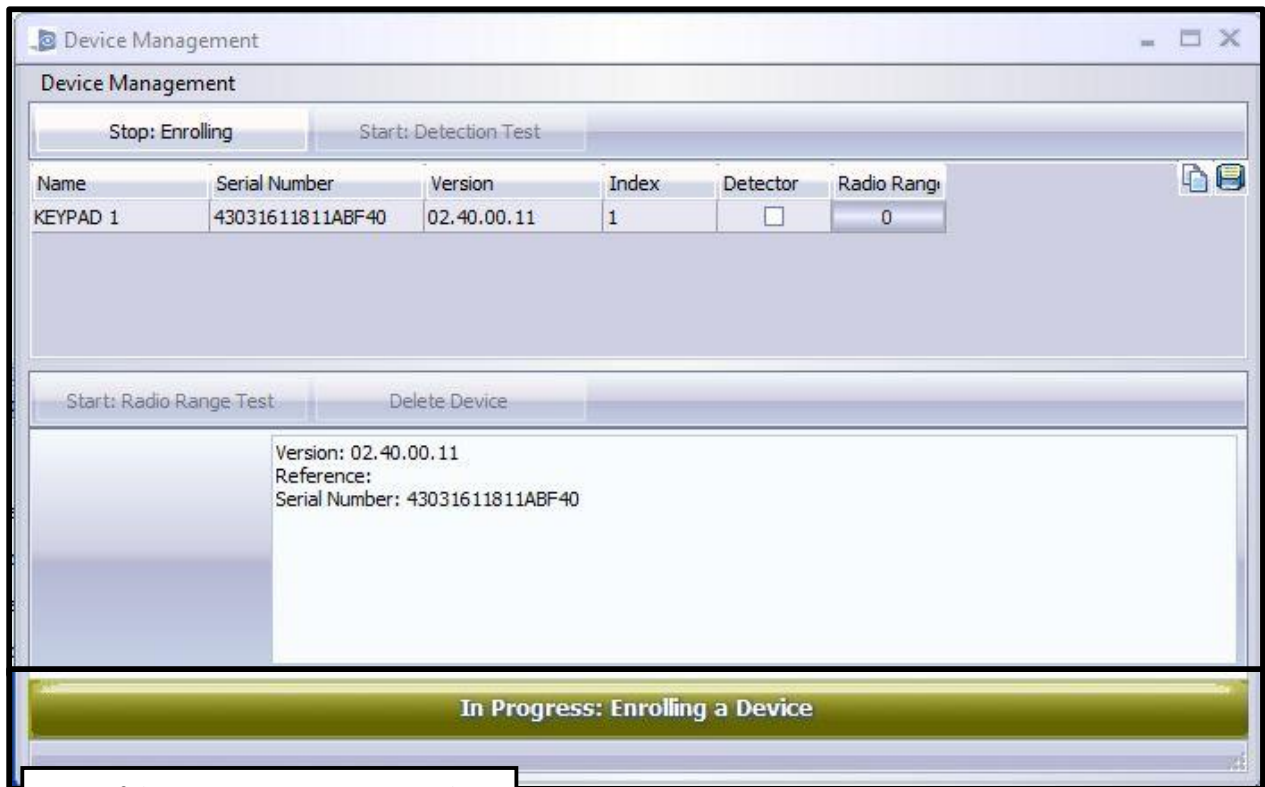
3. After loading a configuration file you will need to click **Export** in order to save changes



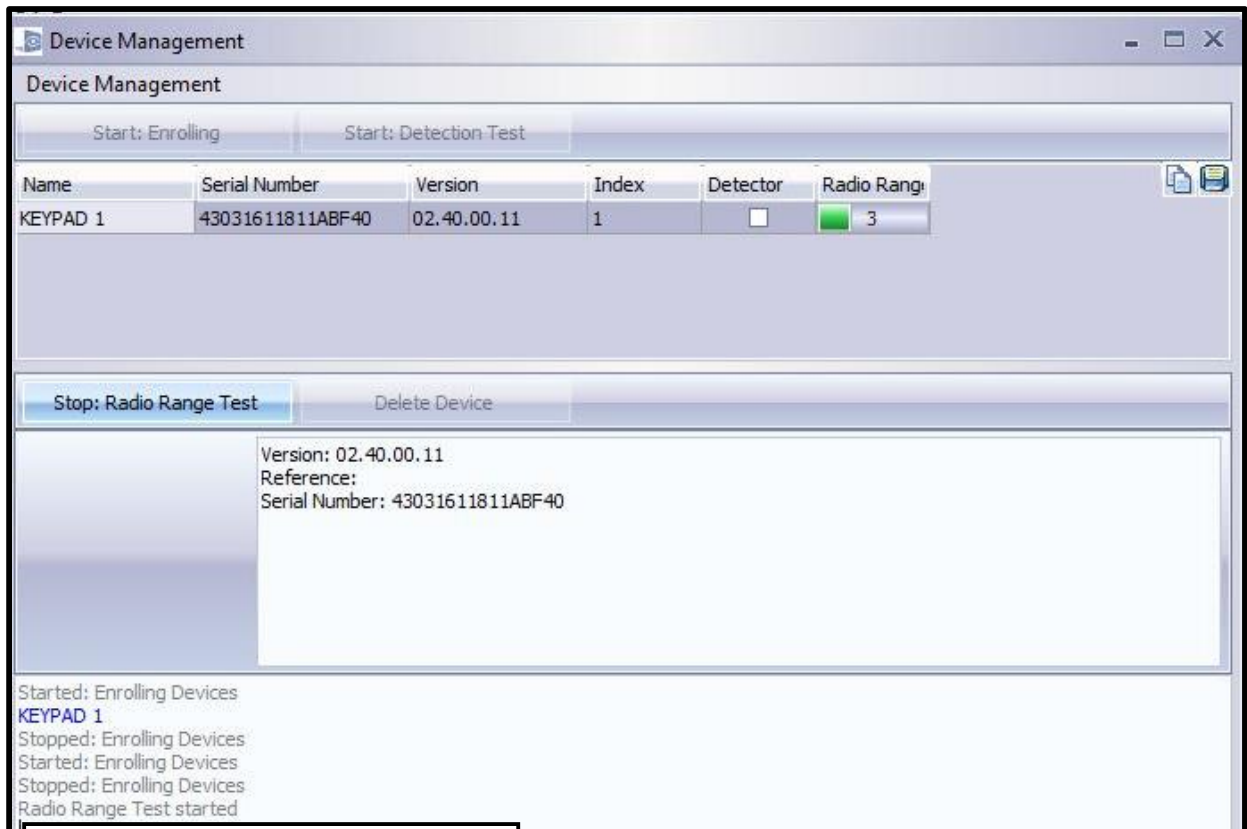
6. **Device Management:** Once connected with the Control Panel you can put the panel into a learn mode for Videofied devices. You can also perform the deletion of a device, the radio range test, and functional test for devices in this console.

View of the Device management window when first opened.



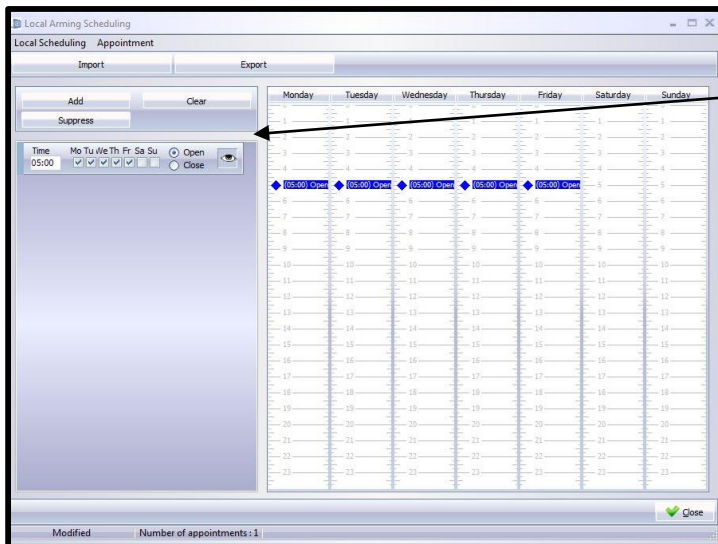


View of the Device management window during device enrollment



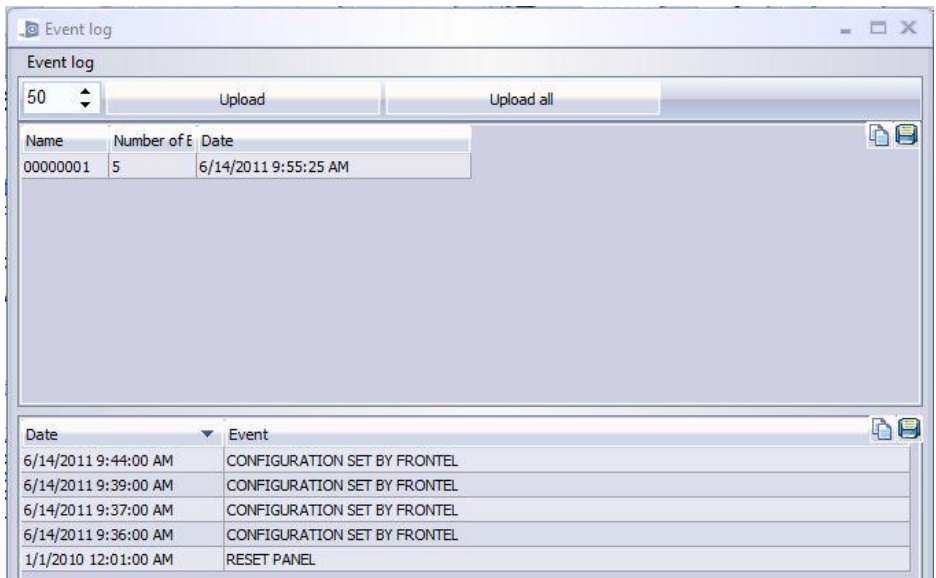
View of the Device management window during device Radio Range test

- Scheduling:** This feature allows you to enter up to 99 scheduled arming/disarming over 7 days into the Control Panel. In order for this feature to function it must also be enabled in **Edit Configuration**.

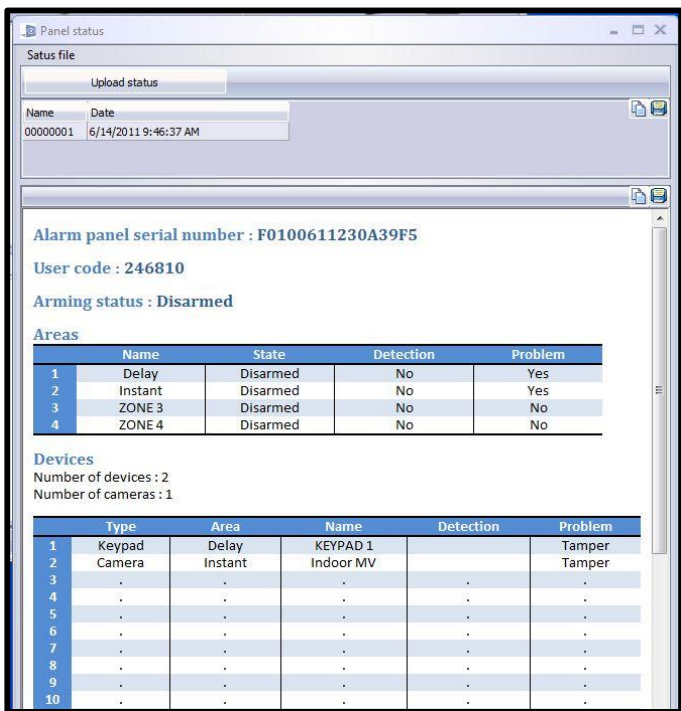


➤ To enter a new schedule you will hit ADD -> check the boxes for the days that it will apply -> choose whether it is an open or a close -> and then the time that you want it to happen. Even though this is happening 4 days a week it is counted as one 'appointment' (99 limit)

- Set Date/Time to PC:** Clicking this button will set the time and date on the panel to the date and time on the PC that you are using.
- Panel Status:** While connected to a Control Panel you are able to ask it for the latest status of the devices and panel. This information will tell you if a device has a problem such as Radio Range, Tamper, etc. and also will tell you the panel serial number and account number entered into the control panel in case you want to save the information.



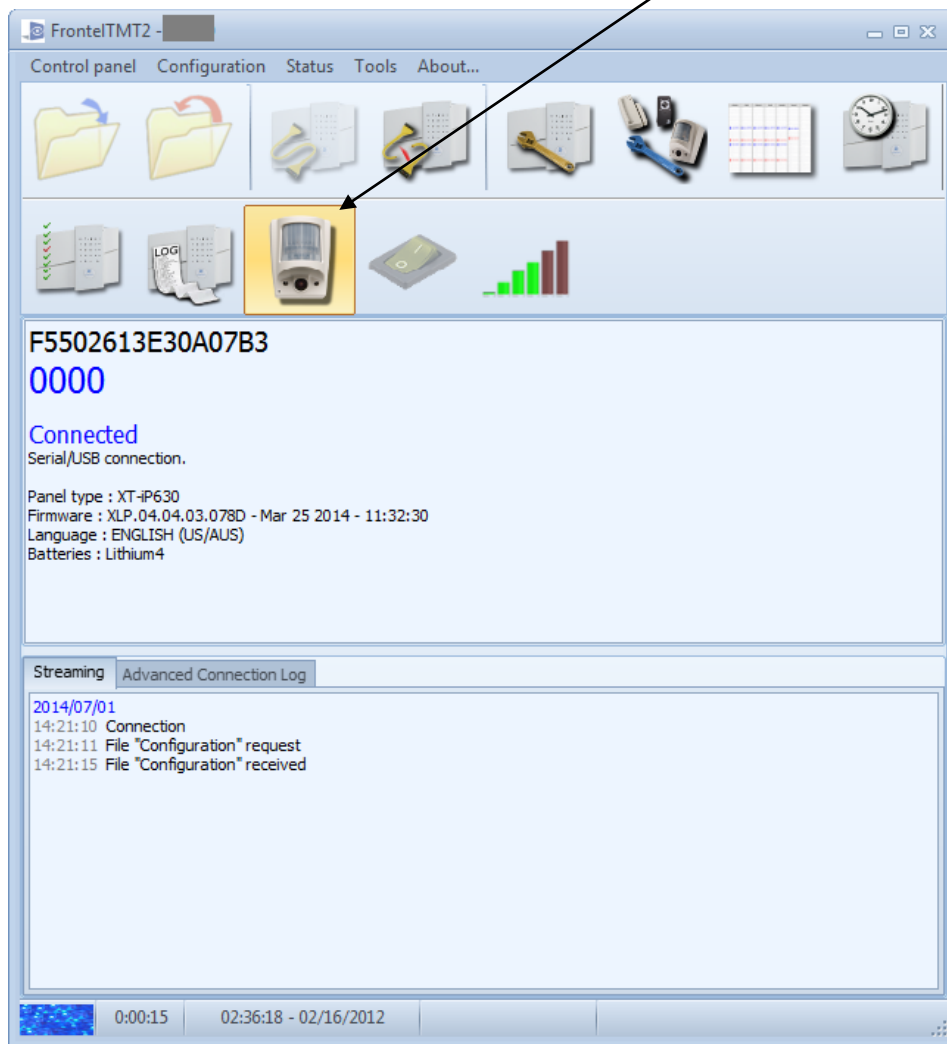
10. **Panel Log:** While connected with a control panel you will be able to request additional event log information from the system. The system will store 4000 events in the control panel, including events that may not be set to transmit to the monitoring station. Video is never stored in the panel and cannot be retrieved this way.



11. **Camera Control:** This feature allows you to take still pictures from MotionViewers that are learned into the system and communicating with the control panel

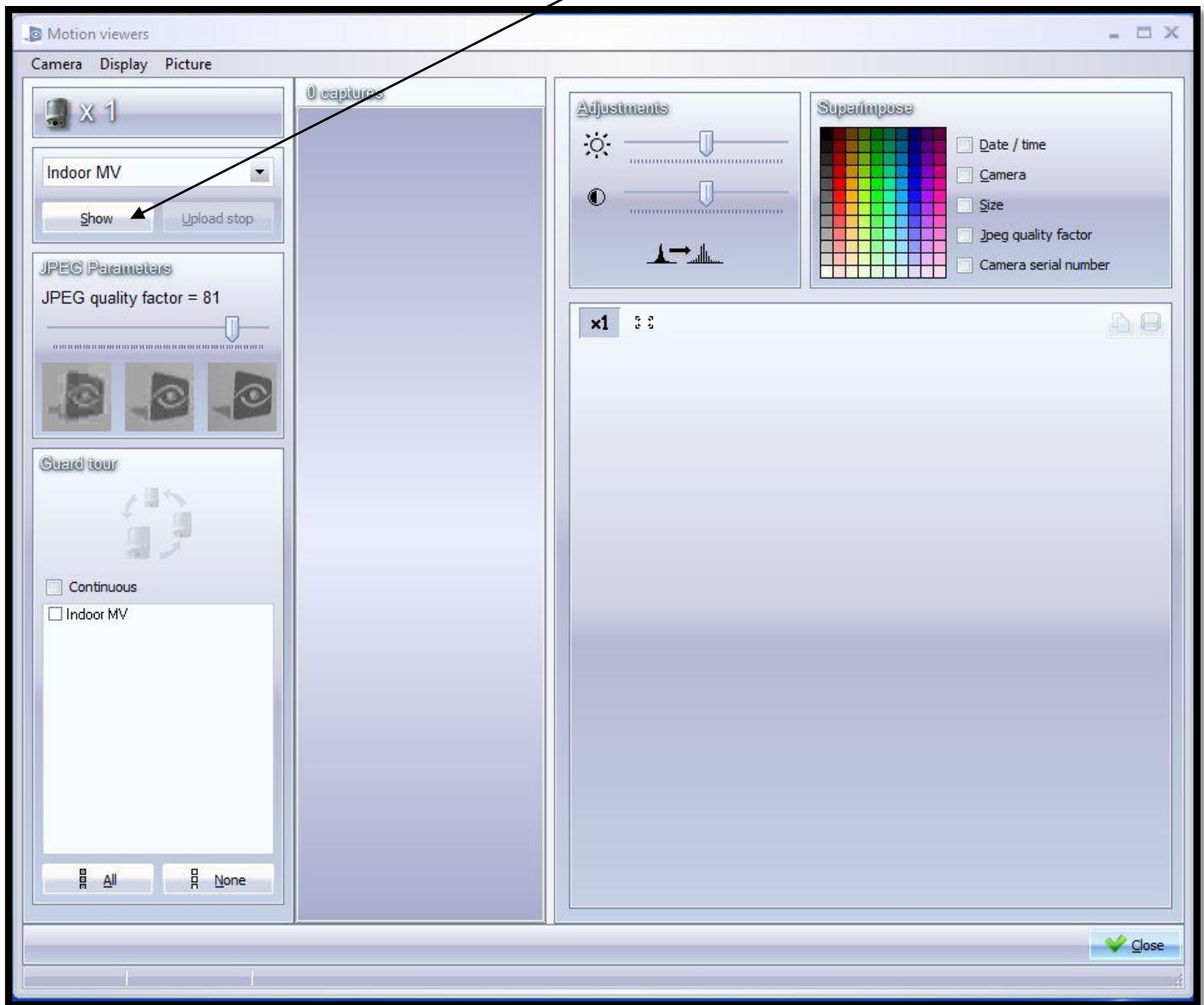
Camera Control Overview

1. Press the Camera Control Icon to pull up the Camera window.

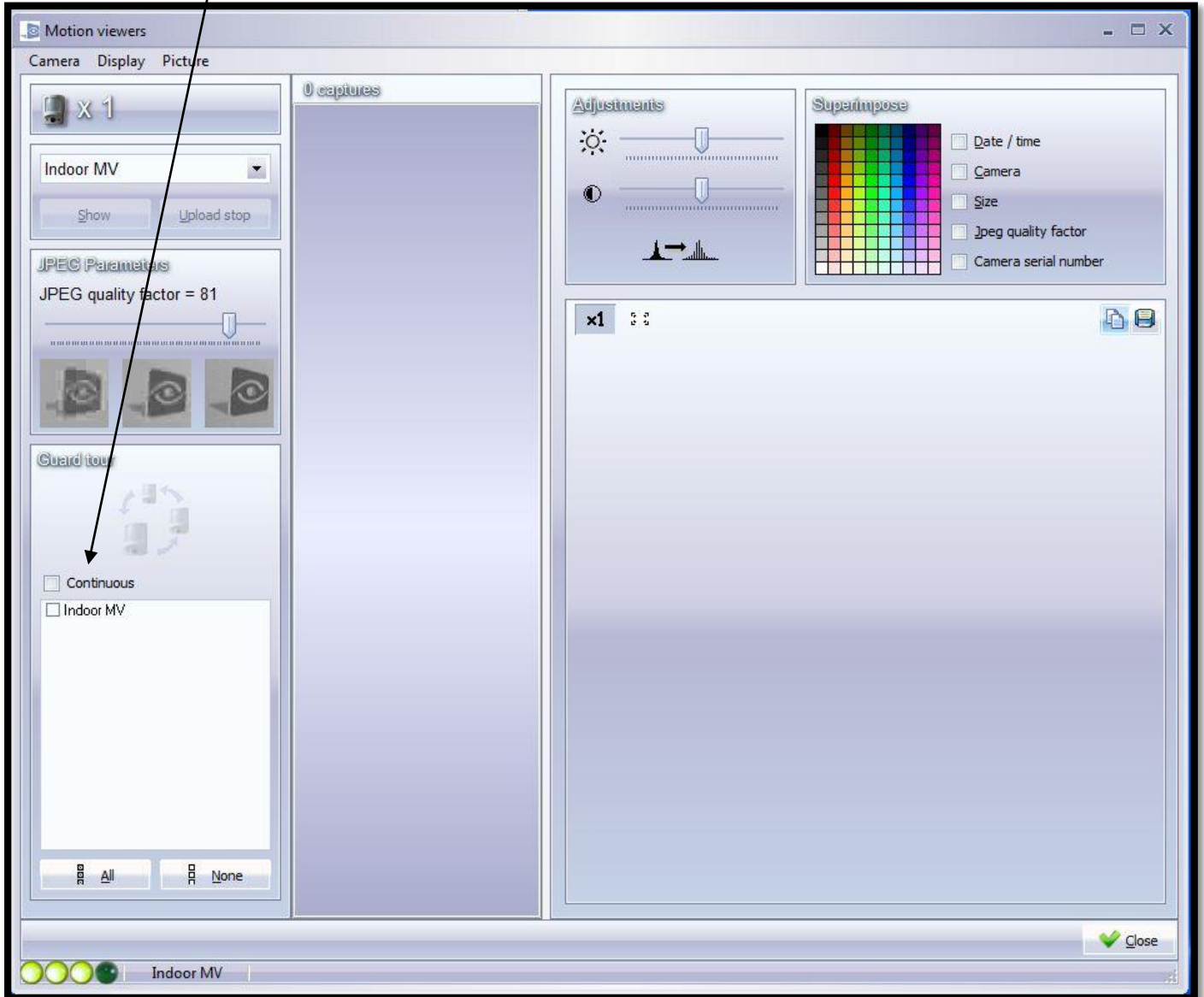


2. MotionViewer still picture options:

- A. The Camera Control feature allows the ability to request photos from specific MotionViewers. To initiate a manual photo request, select the required MotionViewer from the pull-down list and click the **Show** button. The panel will poll the selected device for the photo and return the result under the 'captures' column and a larger view will be displayed on the right side of the window.



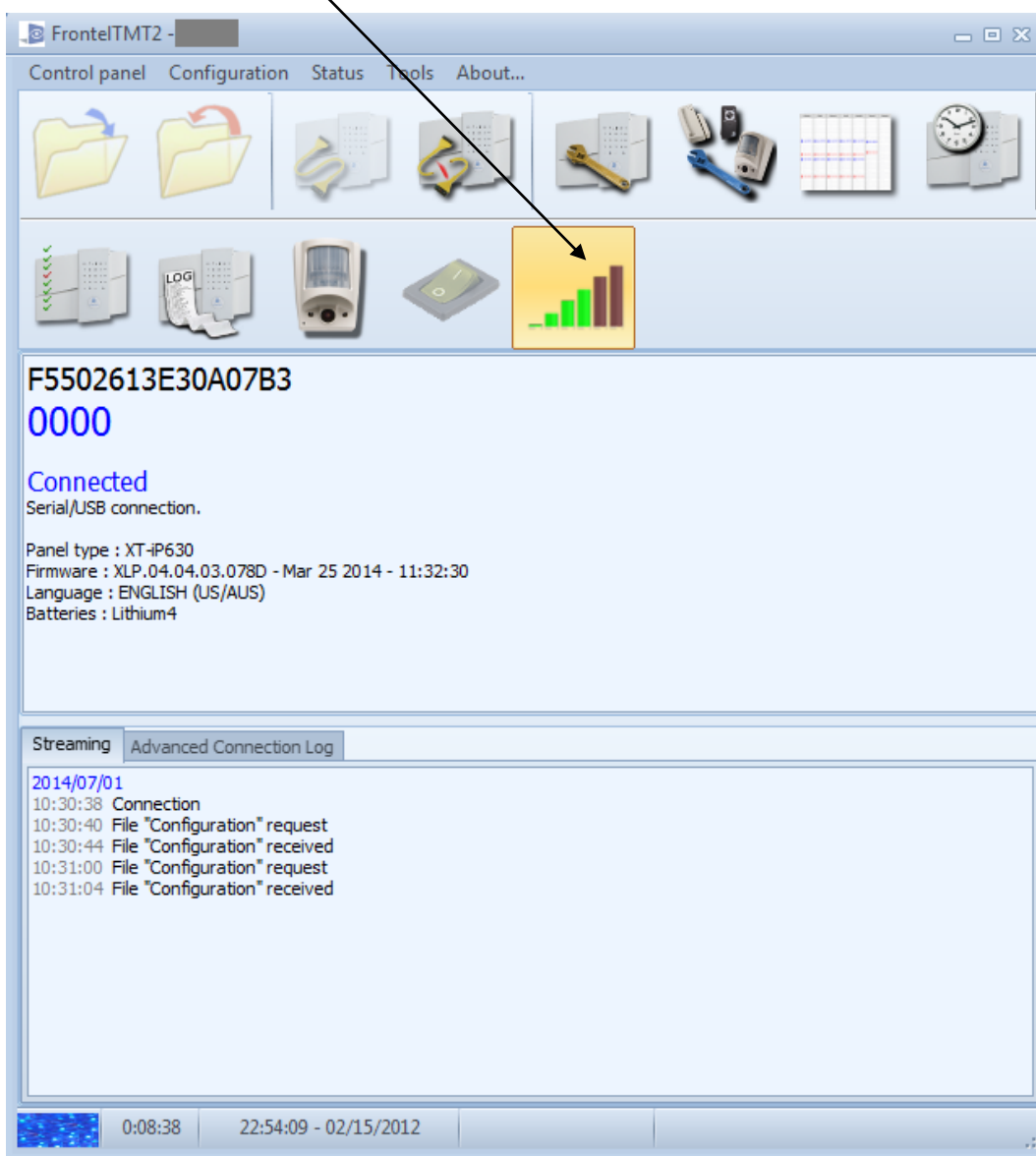
- B. When there are multiple MotionViewers that you would like to take pictures from or if you would like to take continuous still shots, you will use the **Guard Tour** option. Check the MotionViewers that you would like to take the still pictures from. Check the **Continuous** box if you would like the system to repeatedly take pictures. Click the Guard Tour button to initiate the Guard Tour for the selected MotionViewers.



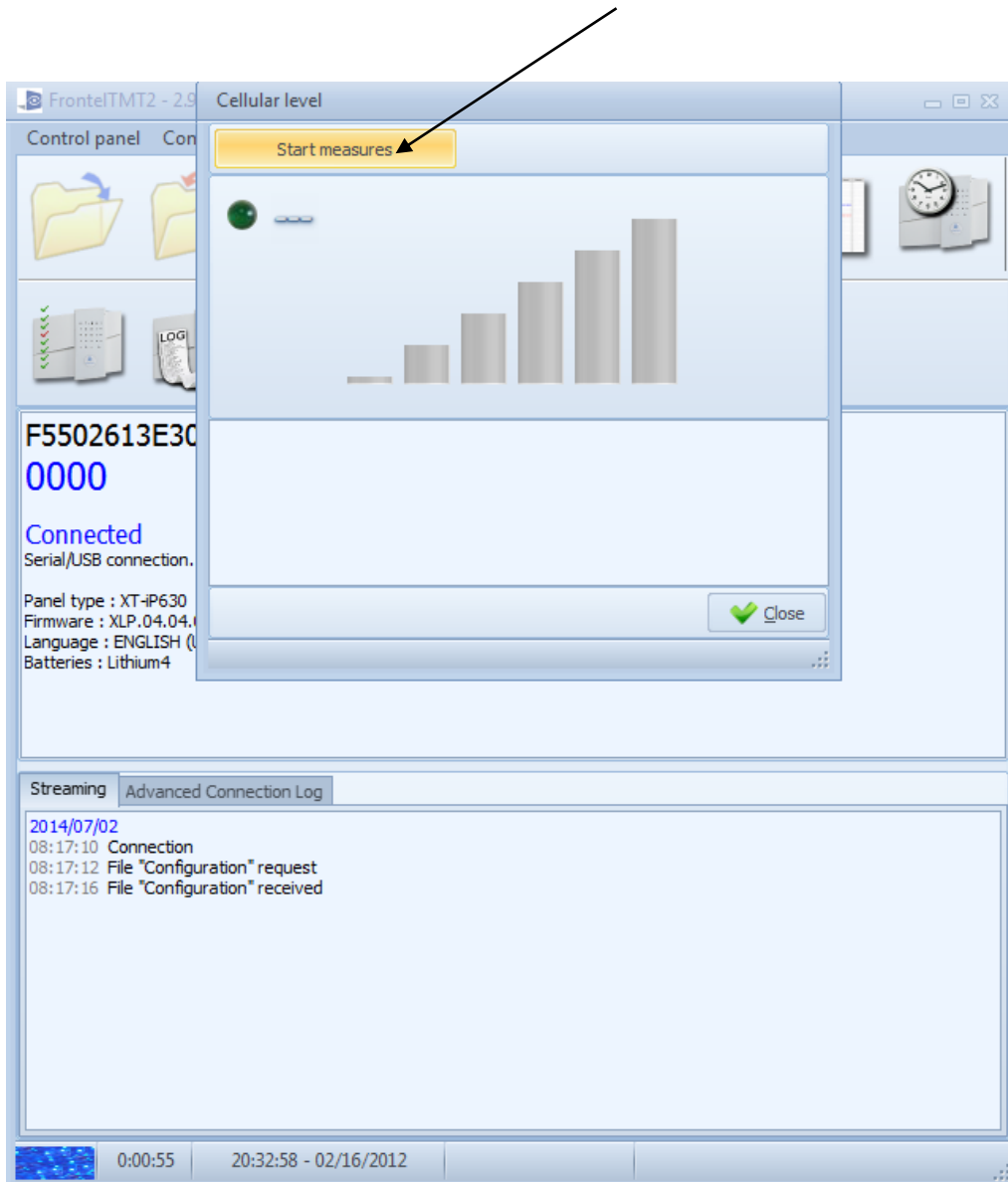
12. **Cellular Level:** This feature will allow you to test the cellular connection level of your control panel and is outlined in the next section below.

Cellular Level Testing

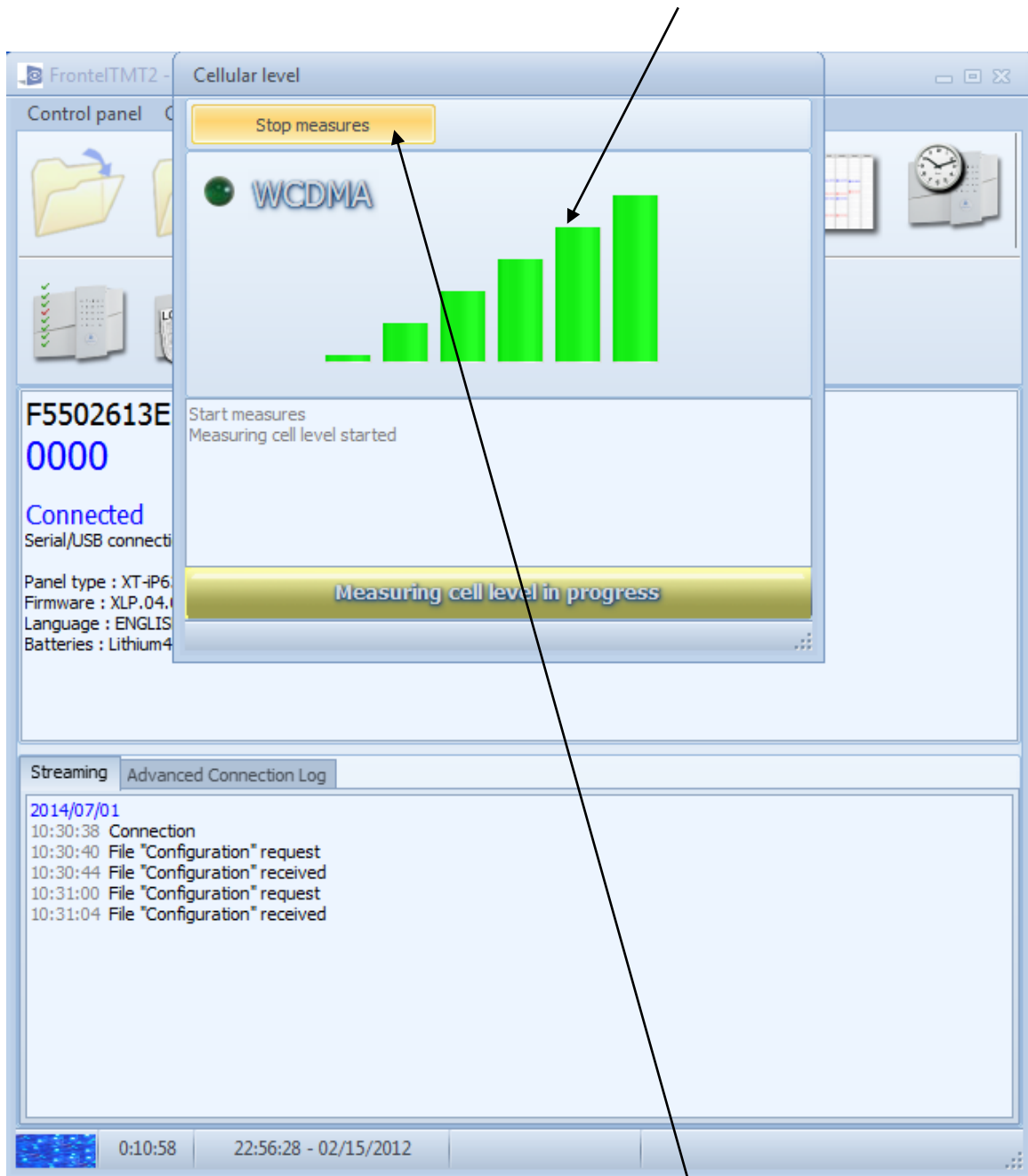
- A. Press the Cellular Level Test icon.



B. When you are ready to begin the test press the **Start Measures** button.



C. Once completed, the displayed green bars will represent your current cellular level.



D. Once completed, you can end the test by clicking the **Stop Measures** button.

FREQUENTLY ASKED QUESTIONS

Q: Can I save the configuration from one panel and import into another?

A: Yes, first click the 'Edit Configuration' tab from the main menu. Once in configuration you can simply select load/save from the 'Edit' dropdown menu. (Devices will not be transferred) See pg.7

Q: Can I take test images from motion viewers through the software?

A: Yes, if your panel is on firmware version 04.03.07 or newer you simply need to select the 'Camera Control' icon, choose a motion viewer, and click 'Show' to view an image of what that device is seeing. If you are using an older firmware you will need to send in an event from the system first to connect to the software remotely. See pg.13

Q: Can I test my cellular level through the software?

A: Yes, simply click the 'Cellular Level Test' icon from the main menu and use the start/stop measures icons to perform the test. See pg.15

Q: Can I perform a radio range test for my devices through the software?

A: Yes, simply enter into 'Device Management' and click the 'Start/Stop Radio Range Test' button to run the test.

Q: Can I enroll/delete devices through the software?

A: Yes, simply enter into the 'Device Management' tab. Once in 'Device Management' you can use the 'Start/Stop Enrolling' button to add a device. To delete a device simply select it from the menu and click 'Delete Device'. See pg. 8/9

Q: Can I create an auto arming/disarming schedule through the software?

A: Yes, to create a schedule you must first enable scheduling in the 'Edit Configuration' tab. Once enabled you can setup the days/times of the schedule from 'Scheduling' tab on the main menu.

Q: Can I view/save the event log through the software?

A: Yes, the software will allow you to view the last 4000 events. Simply enter into 'Event Log', click upload/upload all to view the events in the system. Click on the Disk icon to save the event log as a text document. See pg.11

Q: Can I program a panel remotely with this software?

A: No, this software can only be used in conjunction with the 'USB Programming Cable'. We do offer a separate version of the software that can be used over the air with our panels. Contact Videofied Technical Support for more information.

Q: How do I make sure changes I have made will be saved to the panel?

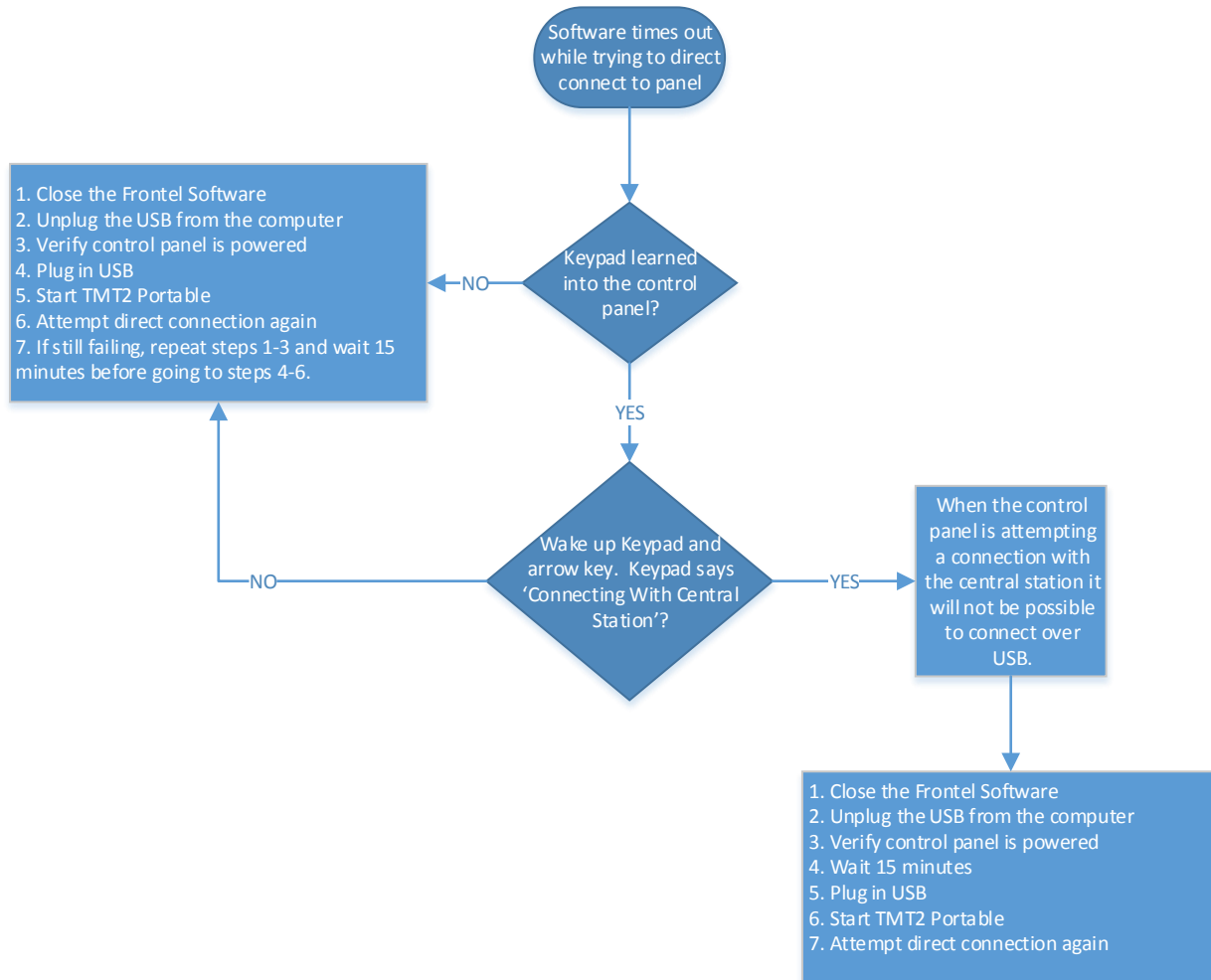
A: After any changes are made to the panel configuration you will need to save those changes by clicking the 'Export' button that can be found in the bottom right hand corner of the configuration page. See pg.6

Manual continued on next page.

TROUBLESHOOTING

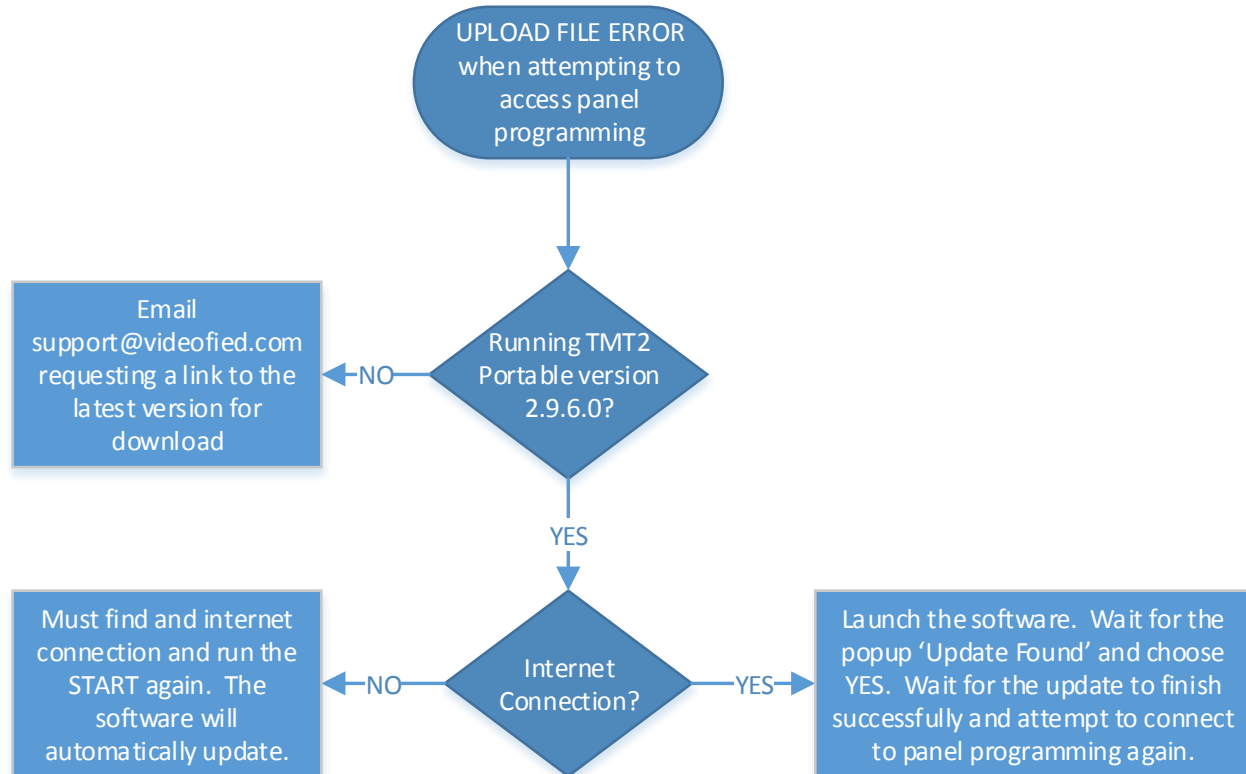
1. Software is timing out while trying to connect with the panel:

- Check to see if the panel is attempting to connect with the monitoring station
 - If the panel is attempting to connect with the monitoring station, wait for connection to timeout, repeat direct connection with software.



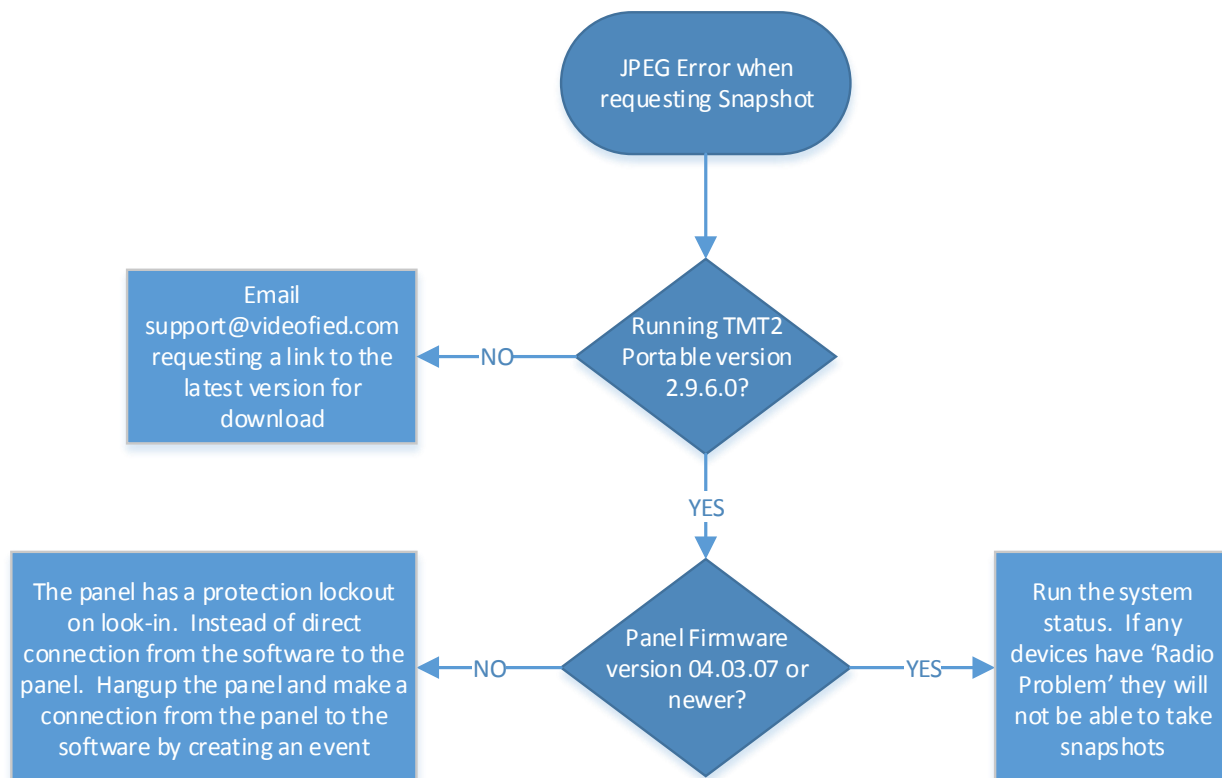
2. Receiving 'UPLOAD FILE ERROR' while attempting to connect with the panel:

- Can be an indication that the 'REX FILES' for the software are not up to date
 - Check to make sure that you are using SOFTWARE VERSION 2.9.6.0 or newer
 - The current version of TMT2 will auto update as long as you have an internet connection



3. Receiving a 'JPEG error' while requesting a test image:

- If the panel isn't on firmware version 04.03.07 or newer you will need to send in an event from the system first before connect to the software remotely.
 - Panel must be connected via Direct Connection at least once previously and disconnected before it is able to send in an event over USB.
 - Pull the panel up through 'Open Alarm Panel List', once the panel is found in the list click it and click the OK button. If the panel is still connected it will have a check mark in the far right box.
 - With the main screen showing that the panel is disconnected, using the keypad, type 314159. This command will send a remote keypad enrollment request, a backdoor to force the panel to connect to the Central Station. When the signal is received the 'Disconnected' will turn into 'Connected' and a 'blip' will sound letting you know it is connected.



4. Changes made in the software don't save once disconnected:

- All changes made while using the software must first be 'EXPORTED' to the panel before they are made final.

5. Cannot 'EXPORT' the changes I made:

- A red 'Stop Sign' at any of the menu options means that those are required fields that must have an entry in order to 'EXPORT' the changes to the control panel.

6. Monitoring parameters do not show up in the 'Edit Configuration' menu:

- In order to view monitoring parameters Central Station monitoring must first be enabled.
 - Click on the 'Frontels Enabled' tab and check the box next to 'Frontel Security'

7. The Red Light on the "USB Programming Cable" isn't on:

- The light on the USB programming Cable should only illuminate when the software is open.
 - If the software is open and the red light is still not lit simply unplugging the 'USB Cable' and restarting the software will often fix the problem.
 - If the light is still not lit it will indicate the 'USB Driver' isn't installed.
 - The driver can be installed through the 'Device Manager' on your computer.