

In order to monitor VIDEOFIED™ products, the **FRONTEL** software package is necessary.

During an alarm, VIDEOFIED™ signals are received and displayed by **FRONTEL RECEPTION BAY** or **FRONTEL SERVICES**.



FRONTEL SERVICES integrates with your existing alarm monitoring software package

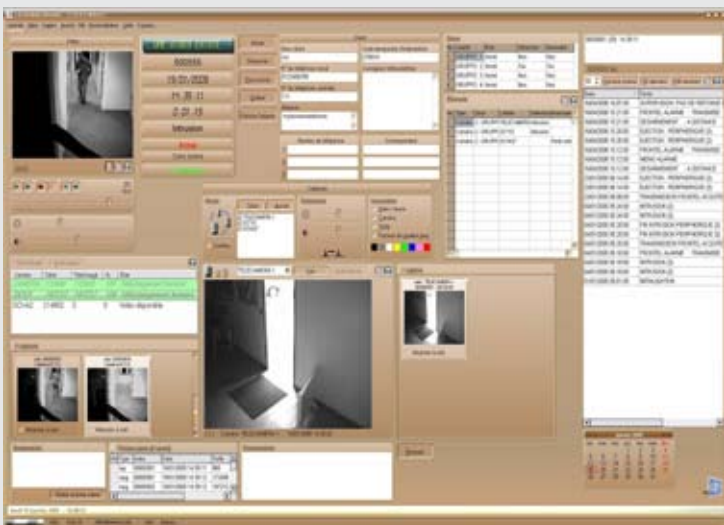
Would you like to integrate VIDEOFIED™ into your monitoring services?

FRONTEL can be integrated in two ways:

> VIDEOFIED™ systems configured for a combined FRONTEL format with Surtec or Contact ID over PSTN. A quick and simple integration with **FRONTEL RECEPTION BAY** and **FRONTEL SERVICES** will distribute VIDEOFIED™ alarms to multiple central station operators.

> VIDEOFIED™ systems configured to transmit via the FRONTEL protocol require an integration with your monitoring software.

FRONTEL SERVICES dispatches the alarm information to the monitoring station software and displays the video on your central station operator workstation.



FRONTEL SERVICES integrates with alarm monitoring software through a variety of interfaces: SIMS, PFIGIP, FICOM, DICE, FRONTEL GI etc.



FRONTEL SERVICES is integrated with many alarm monitoring software packages.

Integration comes in two forms:

> **Hybrid Integration:** The VIDEOFIED™ alarm events have seamless integration in the alarm monitoring software while video is displayed at the operator workstation with the FRONTEL ALARM VIEWER.

> **Complete integration:** the alarm monitoring software displays both alarm events and video.

Company	Software	Version	Type of integration	Integration lev.
Bold Technologies	Manitou		FRONTEL GI (Events + Videos)	Complete
Security Information and Management Systems, Inc. (SIMS)	> SIMSII > SIMSII for Windows	V1.39.11	FRONTEL to SIMS	Hybrid
DICE Corporation	DICE CSMS		FRONTEL to DICE	Hybrid
Microkey Software	Millenium		FRONTEL GI (Events + Dispatch)	Hybrid
Innovative Business Software (IBS)	SBN		FRONTEL GI (Events + Dispatch)	Hybrid
GE Security	MAStermind	V6.22.01	FRONTEL GI (Events + Dispatch)	Hybrid
Patriot Systems Ltd	Patriot	V5.2	FRONTEL GI (Events + Dispatch)	Hybrid
NT Software	ADSW		FRONTEL GI (Events + Videos)	Complete
Suretek	CAMS		FRONTEL GI (Events + Videos)	Complete
Azur Soft	Horus		FRONTEL PFIGIP (Events)	Hybrid
ESI	M1		FRONTEL F1COM (Events)	Hybrid
Securmatique	Logmatel		FRONTEL GI (Events + Videos)	Complete
Tolede	Surveyor		FRONTEL GI (Events)	Hybrid
Oryx	Oryx		FRONTEL GI (Events + Dispatch)	Hybrid
Monitor Computer Systems Ltd	Sentinel		FRONTEL GI (Events + Dispatch)	Complete

Not exhaustive list

The Supervision Module

FRONTEL SERVICES is fully supervised by the supervision module.

The supervision module monitors:

- > **Hard disk** space and available memory
- > **TCP link** with monitoring software
- > **RAS** (modem connections)
- > **Core FRONTEL** applications
- > **The network**

Technical characteristics

ComServ

Protocol TCP/IP
Identification in AES
Communicates with panels via Frontel format

Scripting

Can be triggered by any event
Capabilities:
> Retrieve panel status
> Retrieve event log
> Set time and date
> Arm / Disarm
> Capture images (virtual guard tour)
> Modify configuration

TMT

- Remote maintenance software
- > Retrieve panel status
- > Retrieve event log
- > Delete devices
- > Set time and date
- > Arm / Disarm
- Remote configuration

Miscellaneous

Custom-built interface
• Multiple workstations
• Multi-language
• Database

EMEA SALES

2, rue Alexis de Tocqueville
92160 ANTONY
FRANCE
Telephone: +33 (0)1 55 59 10 25
E-Mail: emeasales@rsivideotech.com

USA SALES

4455 White Bear Parkway, Suite 700
White Bear Lake, MN 55110
USA
Telephone: +1 877 206 5800
E-Mail: usasales@rsivideotech.com